

# Structured Cabling



<b>System Warranty</b>	<b>52</b>
<b>Sterling 6 Products</b>	<b>53-55</b>
<b>Belden Cat 6 Products</b>	<b>56-57</b>
<b>Quabbin Cat6 Patch Cable</b>	<b>58</b>
<b>Sterling 5e Products</b>	<b>59-65</b>
<b>Connectors &amp; Accessories</b>	<b>66</b>
<b>Telco Panels &amp; Cables</b>	<b>67</b>
<b>Adaptors</b>	<b>68-70</b>

**BELDEN**  
SENDING ALL THE RIGHT SIGNALS

STERLING **5<sup>e</sup>**  
ENHANCED PERFORMANCE PRODUCTS

STERLING **6**  
GIGASPEED PERFORMANCE PRODUCTS

## Structured Cabling Index

## 15 Year Category 5e Warranty

Sterling 5e is designed to provide additional performance and bandwidth over and above the requirements of Category 5e. With modern high speed applications, installation practice can have a serious influence on the performance. The Sterling 5e warranty ensures that the additional headroom is available to achieve all 155Mhz applications and that they can run efficiently after installation.

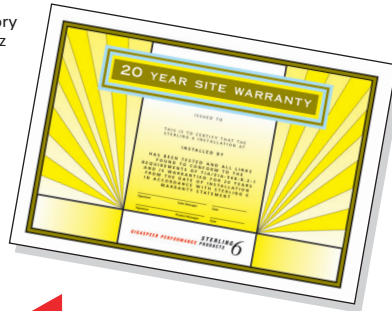


### ATTESTATION OF CONFORMITY

Category 5e Channel and Link  
Delta Electronics verification

## 20 Year Category 6 Warranty

Sterling 6 is the ultimate solution for a future proof network, it is specifically designed to support the requirements for tomorrow's protocol and is fully backwards compatible with Category 5e. Tested and specified to 350 Mhz with a guaranteed performance of 250 Mhz it is the recommended cabling system for all forthcoming installations. Sterling 6 is independently verified to include transition points in the Channel & link performance test.



### ATTESTATION OF CONFORMITY

Category 6 Channel and Link  
Delta Electronics verification



**STERLING 5<sup>e</sup>**  
ENHANCED PERFORMANCE PRODUCTS

**STERLING 6**  
GIGASPEED PERFORMANCE PRODUCTS

Structured Cabling

If you would like to become a certified Sterling 5E & 6 installer please call our sales office for more details

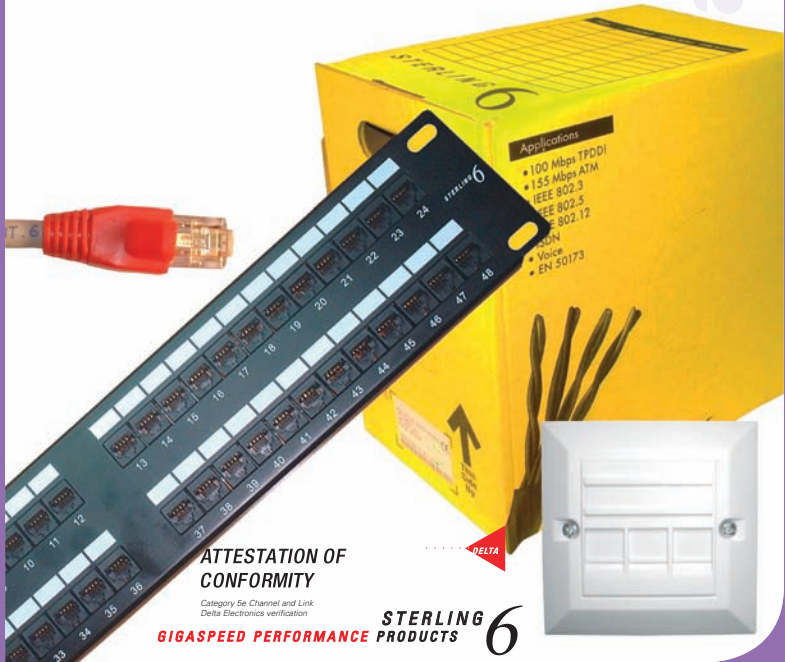


Dublin Tel:- 353 1 866 0444 (24 Hours / 7 Days)  
Cork Tel:- 353 21 432 1900  
Limerick Tel:- 353 61 211 099  
[www.kedington.ie](http://www.kedington.ie)

## Sterling 6

The Sterling 6 structured cabling system incorporates all of the benefits of a premium branded system. It delivers exceptional levels of performance and proven inter-connection compatibility for both fibre and copper. The system offers a comprehensive but flexible performance warranty, together with a choice of training providing clear and precise advice. These combined with a performance level well above the Category 6 guidelines make it unrivalled in the market place.

- Maximum Category 6 performance
- System performance warranty
- Individual site certification for warranted sites
- Comprehensive system and product training
- Full technical support and advice



If you would like to become a certified Sterling 5E & 6 installer please call our sales office for more details



## Structured Cabling Index

\* All orders received before 4.30pm despatched for next working day delivery

**16 Port Category 6 Patch Panels**

691115

**24 Port Category 6 Patch Panels**

691116

**32 Port Category 6 Patch Panels**

691117

**48 Port Category 6 Patch Panels**

691118

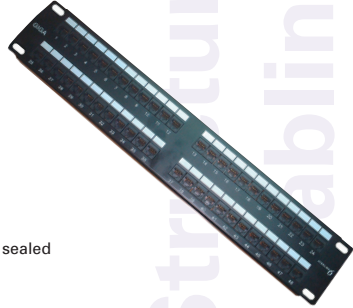
- Exceeds Category 6 ANSI/TIA 568B 2.1
- Ideal for gigabit applications
- Krone / AT+T termination blocks
- 568A and 568B wiring
- 20 year product / system warranty

**ATTESTATION OF CONFORMITY**

Category 6 Channel and Link  
Delta Electronics verification

Each Sterling 6 patch panel is supplied factory sealed and complete with:

- ID labelling strips
- Rear management bar
- Set of cage nuts
- Velcro cable ties



**STERLING 6**  
GIGASPEED PERFORMANCE PRODUCTS

**Cat 6 50x25 Euro Mod** 751001

**STERLING 6**  
GIGASPEED PERFORMANCE PRODUCTS

**Single Faceplate** 751006  
**Double Faceplate** 751007

**STERLING 6**  
GIGASPEED PERFORMANCE PRODUCTS

## Sterling 6

## Cat6 UTP Patch Leads

Length	Yellow	Grey	Red	Green	Blue
0.5m	663008	664008	660008	661008	662008
1m	663009	664009	660009	661009	662009
2m	663010	664010	660010	661010	662010
3m	663011	664011	660011	661011	662011
5m	663012	664012	660012	661012	662012
10m	663014	664014	663014	661014	662014



New Component Compliant Cat6 UTP Patch Leads.

High Quality, high performance patch leads far exceeding Cat6 TIA/EIA-568-B.2.1 requirements.

4 pair 24awg 550mhz Cat6 UTP cable.

50 micron gold RJ45 short body plugs.

Fully Moulded low profile Snagless Boot.

ROHS compliant

**STERLING**  
GIGASPEED PERFORMANCE PRODUCTS **6**

Structured  
Cabling

## Sterling 6

## Cat 6 S/FTP Patch Leads

Length	Yellow	Grey	Red	Green	Blue
0.5m	31032-0.5	31024-0.5	31031-0.5	31033-0.5	31034-0.5
1m	31032-1	31024-1	31031-1	31033-1	31034-1
2m	31032-2	31024-2	31031-2	31033-2	31034-2
3m	31032-3	31024-3	31031-3	31033-3	31034-3
5m	31032-5	31024-5	31031-5	31033-5	31034-5
7m	31032-7	31024-7	31031-7	31033-7	31034-7
10m	31032-10	31024-10	31031-10	31033-10	31034-10



Additional lengths available.

**STERLING**  
GIGASPEED PERFORMANCE PRODUCTS **6**

Structured  
Cabling

## Structured Cabling Index

\* All orders received before 4.30pm despatched for next working day delivery

## Belden

## Cable

**4 Pair, 24 AWG, Cat 6 PVC, Blue, 305 m (1000 ft.), Spool-in-box**

24566915

**4 Pair, 24 AWG, Cat 6 LSOH, Purple, 305 m (1000 ft.), 11-3/4N Spool**

24568005

**GigaFlex 2400 Cable Series** consists of 4 Pair UTP Cables that exceed Category 6 requirements as per ANSI/TIA/EIA-568-B.2-1. When used as a horizontal cable in the Belden IBDN 2400, the channel provides at least 250 MHz of bandwidth and a data rate of 2.4 GB/s.



**BELDEN**  
SENDING ALL THE RIGHT SIGNALS

Structured  
Cabling

## Belden

## Patch Panels

**GigaFlex PS6+ Patch Panel, 1U, 24 Port, Black**

AX101611

**GigaFlex PS6+ Patch Panel, 2U, 48 Port, Black**

AX101613

**GigaFlex PS6+ Patch Panel** is a fully loaded patch panel using black GigaFlex PS6+ Modules. The unmatched performance of the GigaFlex PS6+ Module exceeds all parameters specified in the Category 6 standard. All performance characteristics including NEXT, FEXT, Attenuation and Return Loss have been set to guarantee transmission performance up to 300 MHz and a data-rate of up to 4.8 Gb/s.

**BELDEN**  
SENDING ALL THE RIGHT SIGNALS



Structured  
Cabling

## Belden

## Modules

**T568A/B, Black**

AX101066

**GigaFlex PS6+ Module** exceeds all parameters specified in the Category 6 standard. The GigaFlex PS6+ is the module of choice for terminating UTP Cables into the 6C Style Faceplates. All performance characteristics have been set to guarantee transmission performance up to 300 MHz and a data-rate of up to 4.8 Gb/s.

**BELDEN**  
SENDING ALL THE RIGHT SIGNALS



Structured  
Cabling

Dublin Tel:- 353 1 866 0444 (24 Hours / 7 Days)

Cork Tel:- 353 21 432 1900

Limerick Tel:- 353 61 211 099

[www.kedington.ie](http://www.kedington.ie)

## Belden

## Faceplates

European "6C" Style Faceplate, Single Gang, Single App, White	AX101372
European "6C" Style Faceplate, Single Gang, Dual App, White	AX101373
European "6C" Style Faceplate, Double Gang, Quad App, White	AX101374
European "6C" Shuttered Module Holder, Flush, White	AX101375
European "6C" Shuttered Module Holder, Angled, White	AX101376
European "6C", Blank Insert, White	AX101377

European "6C" Style Faceplate and Inserts are designed to accept the GigaFlex Modules. They include a shutter to protect the module against dust and other contaminants.



**BELDEN**  
SENDING ALL THE RIGHT SIGNALS

Structured  
Cabling

## Belden

## Patch Leads

Colours available, Blue, Grey, Red, White, Green and Yellow

4 Pair, 23 AWG Solid, T568A/B, 0.6 m, Grey	AX350049
4 Pair, 23 AWG Solid, T568A/B, 1.2 m, Grey	AX350050
4 Pair, 23 AWG Solid, T568A/B, 2.1 m, Grey	AX350051
4 Pair, 23 AWG Solid, T568A/B, 3.0 m, Grey	AX350052
4 Pair, 23 AWG Solid, T568A/B, 4.6 m, Grey	AX350053
4 Pair, 23 AWG Solid, T568A/B, 7.6 m, Grey	AX350054

**GigaFlex PS6+ Modular Cords** are 4 Pair 23 AWG modular cords designed for use with the Belden IBDN System 2400 Series, providing channel bandwidths of 250 MHz. The GigaFlex PS6+ Modular Cord's patented design, with a very small footprint, makes them fully compatible with any of the highest density switches.

**BELDEN**  
SENDING ALL THE RIGHT SIGNALS



Structured  
Cabling

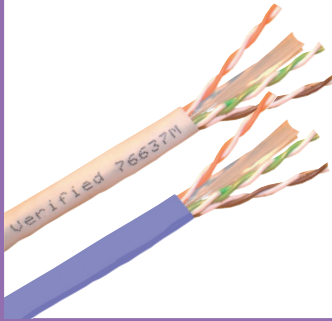
# Structured Cabling Index

\* All orders received before 4.30pm despatched for next working day delivery

**1000ft Box Sterling 6 Solid**  
**1000ft Box Sterling 6 Solid LSOH**

951001

951003



**STERLING 6**  
**GIGASPEED PERFORMANCE PRODUCTS**

**305m Cat6 Stranded Cable Quabbin**

Available in 10 colours (picture below shows black & white cable)



951200 = Black  
 951202 = Red  
 951203 = Orange  
 951204 = Yellow  
 951205 = Green  
 951206 = Blue  
 951207 = Violet  
 951208 = Grey  
 951209 = White  
 951212 = Pink

DataMax® 6E, 4 pair, 24 AWG stranded, polyethylene insulation, PVC jacket, unshielded. TIA Category 6 and ISO 11801 Class E patch/jumper cable. Backward compatible with 5 and 5e hardware. Performance tested to 600 MHz.

Cat6 UTP patch cables can also be made to any specified length. Please call sales office for pricing.



## Sterling 5e

The Sterling 5e structured cabling system incorporates all of the benefits of a premium branded system. It delivers exceptional levels of performance and proven inter-connection compatibility for both fibre and copper. The system offers a comprehensive but flexible performance warranty, together with a choice of training providing clear and precise advice. These combined with a performance level well above the Category 5e guidelines make it unrivalled in the market place.

- Maximum Category 5e performance
- System performance warranty
- Individual site certification for warranted sites
- Comprehensive system and product training
- Full technical support and advice

### ATTESTATION OF CONFORMITY

Category 5e Channel and Link  
Delta Electronics verification



**STERLING 5e**  
ENHANCED PERFORMANCE PRODUCTS

If you would like to become a certified Sterling 5E & 6 installer please call our sales office for more details



## Structured Cabling Index

\* All orders received before 4.30pm despatched for next working day delivery

## Sterling 5e

## Patch Panels

**18 Port Cat 5e Patch Panels**

291115

**24 Port Cat 5e Patch Panels**

291116

**36 Port Cat 5e Patch Panels**

291117

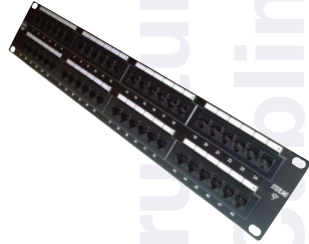
**48 Port Cat 5e Patch Panels**

291118

- Industry standard Krone / AT+T terminations
- Full Category 5e performance
- Rear cable management
- Removable identification strip
- 15 year performance warranty

**ATTESTATION OF CONFORMITY**

Category 5e Channel and Link  
Delta Electronics verification



Each Sterling 5e patch panel is supplied factory sealed and complete with:

- ID labelling strips
- Rear cable tie base
- 1 x set of cage nuts
- 1 x set of cable ties
- IDC punchdown tool

**STERLING 5<sup>e</sup>**  
ENHANCED PERFORMANCE PRODUCTS

## Sterling 5e

## Modules

**Low Profile Module** 251003  
**50x25**


## Sterling 5e

## Modules

**Low Profile Module** 251021  
**24x38 6c**

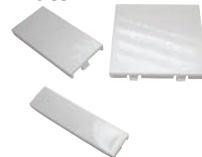

## Sterling 5e

## Faceplates

**2 Gang Faceplate** 251001  
**4 Gang Faceplate** 251008


## Sterling 5e

## Blanking Plates

**1/4 Plate** 251002  
**1/2 Plate** 251009  
**1/1 Plate** 251010


Dublin Tel:- 353 1 866 0444 (24 Hours / 7 Days)

Cork Tel:- 353 21 432 1900

Limerick Tel:- 353 61 211 099

[www.kedington.ie](http://www.kedington.ie)

## Sterling 5e

## Faceplates &amp; Modules

**Single Kits**

241001

Each Sterling 5e single module kit is supplied boxed, complete with:

- 1 x Category 5e module (fitted)
- 1 x single faceplate (fitted)
- 2 x quarter blanking plates (fitted)
- 1 x cable tie
- 1 x module ID strip
- 1 x termination block dust cover (fitted)
- 2 x fixing screws
- 1 x pack of adhesive numbers

**ATTESTATION OF CONFORMITY**

Category 5e Channel and Link  
Delta Electronics verification



**STERLING 5<sup>e</sup>**  
ENHANCED PERFORMANCE PRODUCTS



Structured  
Cabling

## Sterling 5e

## Faceplates &amp; Modules

**Double Kits**

241002

Each Sterling 5e double module kit is supplied boxed, complete with:

- 2 x Category 5e modules (fitted)
- 1 x single faceplate (fitted)
- 2 x cable ties
- 2 x module ID strip
- 2 x termination block dust cover (fitted)
- 2 x fixing screws
- 2 x pack of adhesive numbers

**ATTESTATION OF CONFORMITY**

Category 5e Channel and Link  
Delta Electronics verification



**STERLING 5<sup>e</sup>**  
ENHANCED PERFORMANCE PRODUCTS



Structured  
Cabling

## Sterling 5e

## 25mm Back Boxes

- |                         |        |
|-------------------------|--------|
| <b>1 Gang PVC Boxes</b> | 241003 |
| <b>2 Gang PVC Boxes</b> | 241004 |



If you would like to become a certified Sterling 5E & 6 installer please call our sales office for more details

## Structured Cabling Index

\* All orders received before 4.30pm despatched for next working day delivery

## Sterling 5e

## Cat5E UTP Patch Leads

Length	Yellow	Grey	Red	Green	Blue	Violet
0.5m	141008	101008	111008	121008	131008	151060
1m	141009	101009	111009	121009	131009	151061
2m	141010	101010	111010	121010	131010	151062
3m	141011	101011	111011	121011	131011	151063
5m	141012	101012	111012	121012	131012	151064
7m	141013	101013	111013	121013	131013	151065
10m	141014	101014	111014	121014	131014	151066



ROHS compliant

Sterling 5e UTP patch leads are designed to meet and exceed the EIA/TIA-568a performance requirements. Each lead is injection moulded into a short bodied 50 micron COB plug to provide a high density solution. Each lead is supplied individually coiled and bagged.

LSOH versions can also be manufactured to order

**GIGASPEED PERFORMANCE PRODUCTS** *STERLING 5<sup>e</sup>*

Structured Cabling

## Sterling 5e

## Cat5E STP Moulded Patch Leads

Length	0.5m	1m	2m	3m	5m	7m	10m
Grey	101015	101016	101017	101018	101019	101020	101021



**GIGASPEED PERFORMANCE PRODUCTS** *STERLING 5<sup>e</sup>*

Structured Cabling

Dublin Tel:- 353 1 866 0444 (24 Hours / 7 Days)

Cork Tel:- 353 21 432 1900

Limerick Tel:- 353 61 211 099

[www.kedington.ie](http://www.kedington.ie)

## Sterling 5e

## Shielded Face plates &amp; Modules

**Single Kits Shielded**

11817

Each Category 5e single module kit is supplied boxed, complete with:

- 1 x Category 5e STP module (fitted)
- 1 x single faceplate (fitted)
- 2 x quarter blanking plates (fitted)
- 1 x cable tie
- 2 x fixing screws
- 1 x pack of adhesive numbers

**ATTESTATION OF CONFORMITY**

Category 5e Channel and Link  
Delta Electronics verification



**STERLING 5<sup>e</sup>**  
ENHANCED PERFORMANCE PRODUCTS

(Shown with shutter open)

Structured Cabling

## Sterling 5e

## Shielded Face plates &amp; Modules

**Double Kits Shielded**

11819

Each Category 5e double module kit is supplied boxed, complete with:

- 2 x Category 5e STP module (fitted)
- 1 x single faceplate (fitted)
- 2 x cable tie
- 2 x fixing screws
- 2 x packs of adhesive numbers

**ATTESTATION OF CONFORMITY**

Category 5e Channel and Link  
Delta Electronics verification



**STERLING 5<sup>e</sup>**  
ENHANCED PERFORMANCE PRODUCTS

(Shown with shutter open)

Structured Cabling

If you would like to become a certified Sterling 5E & 6 installer please call our sales office for more details

**Structured Cabling Index**

\* All orders received before 4.30pm despatched for next working day delivery

### 16 Port Cat 5e Patch Panels Shielded

### 24 Port Cat 5e Patch Panels Shielded

291110

291111

Each panel is fully shielded with an overall metal cover offering 360 deg termination of the cable screen for minimum transfer impedance. Incoming cables are terminated on Dual IDC blocks and are supported by the integral cable management tray.



Complete with:

- Earth bonding strap
- 1 x set of cage nuts
- Rear cable tie base
- Screw down strain relief
- 1 x set of cable ties
- IDC punchdown tool

**STERLING 5<sup>e</sup>**  
ENHANCED PERFORMANCE PRODUCTS

Length	Yellow	Grey	Red	Green	Blue	Black
0.5m	21032-0.5	21024-0.5	21031-0.5	21033-0.5	21034-0.5	21047-0.5
1m	21032-1	21024-1	21031-1	21033-1	21034-1	21047-1
2m	21032-2	21024-2	21031-2	21033-2	21034-2	21047-2
3m	21032-3	21024-3	21031-3	21033-3	21034-3	21047-3
5m	21032-5	21024-5	21031-5	21033-5	21034-5	21047-5
7m	21032-7	21024-7	21031-7	21033-7	21034-7	21047-7
10m	21032-10	21024-10	21031-10	21033-10	21034-10	21047-10

Additional lengths available

Manufactured in the UK using high quality Cat5e STP 350mhz cable and Shielded 50 micron gold plugs.

Can be made to any desired length.



**STERLING 5<sup>e</sup>**  
GIGASPEED PERFORMANCE PRODUCTS

If you would like to become a certified Sterling 5E & 6 installer please call our sales office for more details



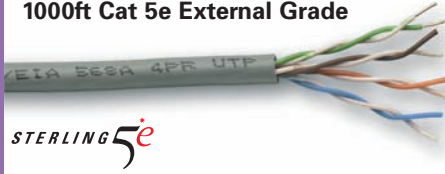
Dublin Tel:- 353 1 866 0444 (24 Hours / 7 Days)  
Cork Tel:- 353 21 432 1900  
Limerick Tel:- 353 61 211 099

[www.kedington.ie](http://www.kedington.ie)

Sterling 5e

Cat5e UTP Solid

1000ft Cat 5e Solid  
1000ft Cat 5e External Grade



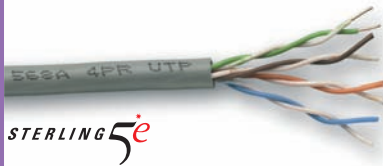
951011  
951005

Structured  
Cabling

Sterling 5e

Cat5e UTP Solid LSOH

1000ft Cat5e Solid LSOH



951018

Structured  
Cabling

Sterling 5e

Cat5e Stranded

500m Cat5 UTP Stranded Wire

Available in 10 colours (picture below shows black &amp; white cable)



21026-BE = Grey  
21026-BL = Blue  
21026-GN = Green  
21026-BK = Black  
21026-YE = Yellow  
21026-RD = Red  
11004 = Pink  
Q5403 = Orange  
21036-MV = Violet  
21039-WT = White

-SUPPLIED ON 500M DRUMS  
-CAT5E UTP 4 TWP 24AWG 350MHZ WIRE  
-AVAILABLE IN 10 COLOURS

Structured  
Cabling

## Structured Cabling Index

\* All orders received before 4.30pm despatched for next working day delivery

## RJ45 Connectors

**Cat 5e RJ45 Crimp Plug**  
**Solid RJ45 Plug**  
**Flat RJ45 Plug**  
**AMP RJ45 Plug Solid/Stranded**  
**10 Way RJ45 Plug**



701004  
 25243  
 1271  
 701224-AMP  
 701005  
 11869

**RJ45 Crimp Plug Shielded**



## Cat6 RJ45 Connectors

**Sentinel UTP Plug (with loading Bar)**  
**Sentinel STP Plug (with loading Bar)**



701017  
 701021

## Connectors

**RJ45 Strain Relief Boots (Bagged in 100's)**

**Grey**  
**Blue**  
**Green**  
**Black**  
**Yellow**  
**Red**  
**Pink**  
**Orange**  
**Violet**  
**White**



3596-LG  
 3596-BL  
 3596-GN  
 3596-BK  
 3596-YE  
 3596-RD  
 3596-PK  
 3596-OR  
 3596-MV  
 3596-WH

## Connectors

**RJ22 Crimp Plug 4/4**  
**RJ11 Crimp Plug 4/6**  
**RJ12 Crimp Plug 6/6**



701001  
 701002  
 701003

**BT Crimp Plug 631A**



31104

Dublin Tel:- 353 1 866 0444 (24 Hours / 7 Days)

Cork Tel:- 353 21 432 1900

Limerick Tel:- 353 61 211 099

[www.kedington.ie](http://www.kedington.ie)

**AMP CAT5 TELCO CABLES**

**MALE - MALE**  
**MALE - BARE END**  
**MALE - FEMALE**  
**FEMALE - BARE END**



manufactured to order in the UK using AMP 25 pair telco connectors with 25 pair Category 5 cable. Various connector types available to suit your requirements.

**AVAYA CAT5 TELCO CABLES**

**MALE - MALE**  
**MALE - BARE END**  
**MALE - FEMALE**  
**FEMALE - BARE END**



Avaya Telco cable assemblies also manufactured in the UK to meet TIA/EIA-568A cat5 specification.

**Part Number Creator**

	<b>STYLE</b>	<b>CABLETYPE</b>	<b>HOOD</b>	<b>LENGTH</b>
TEL	(AMP)-AMP	1 (Male Male)	A (110°Degree)	1,2,3 etc
	(AVAYA)-AVA	2 (Male Bare End)	B (180°Degree)	
		3(Male Female)		
		4 (Female Bare End)		

Example : TEL - AMP - 1 - AB - 3

**TELCO PANELS 10/100****HUBBELL 24 PORT PANELS**

Use Hubbell's enhanced 100BASE-T patch panels to connect 10/100BASE-T Fast hubs to a Category 5/5e network. The panel features Category 5 modular 50-pin/25-pair interfaces connected via a printed circuit board to 12 two-pair, 8-position, Ethernet wired RJ45 modular jacks. This PS Category 5 performance, modular 50-pin/25-pair connector is compatible with industry-leading 100BASE-TX and 100BASE-T Fast Ethernet hubs.



## Adaptors

<b>RJ45 Through Coupler Cat3</b>	301001
<b>RJ45 Through Coupler Cat5e UTP X/O</b>	301002
<b>RJ45 Through Coupler Cat5e UTP</b>	301003
<b>RJ45 Through Coupler Cat5e STP</b>	301004
<b>Fully Shielded Cat5e Coupler</b>	25247
<b>RJ12 Through Coupler</b>	1280

Structured  
Cabling

## Adaptors

RJ11-BT Socket (PABX)

775311

Structured  
Cabling

## Adaptors

BT UK Triple  
Adaptor

302051

Telecom  
Products

## Adaptors

BT UK Priority  
Adaptor

302052

Telecom  
Products

Dublin Tel:- 353 1 866 0444 (24 Hours / 7 Days)

Cork Tel:- 353 21 432 1900

Limerick Tel:- 353 61 211 088

www.kedington.ie

## Adaptors

**RJ12 T Piece FMF**

1288



Structured Cabling

## Adaptors

**RJ45 T Piece FMF**  
**RJ45 T Piece FFF**

1289

1179



Structured Cabling

## Adaptors

**Punchdown Through Coupler Cat 5e UTP**

301021

- Extend installed cable to new locations
- Extend cable when reel runs out



Structured Cabling

## Adaptors

**Punchdown Through Coupler Cat 5e STP**

301022

- Extend installed cable to new locations
- Extend cable when reel runs out



Structured Cabling

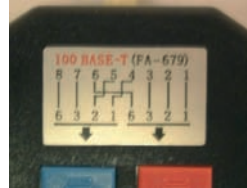
# Structured Cabling Index

\* All orders received before 4.30pm despatched for next working day delivery

**Cat 5e Economiser Type 1**

301013

The Category 5e economiser enables an additional signal to be transmitted through the TWP cable. This allows expansion of an existing system without the need to disrupt the cable infrastructure. Although sold individually, these units must be used in pairs with a device at either end of the cabling.



- Supports 10/100 Mbps
- Splits one 4-pair Cat 5e cable into 2 separate ports
- Housing can be fixed to wall (screws supplied)
- Must be used in pairs

**Cat 5e Economiser Type 2**

301014

This Category 5e economiser enables two users to share the same port. An ideal solution when you wish to share somebody else's port.



- Supports 10 Mbps
- Splits one RJ45 plug Cat 5e cable in to two RJ45 sockets
- Housing can be fixed to the wall (screws supplied)

**Modular Economiser****Modular Economiser Type 1  
Modular Economiser Type 2**

ME-001

ME-002

Same function as the tailed type 1 & TYPE 2 economiser with the additional low profile design allowing to fit side by side in the patch panel to utilise more space.

